



FISH

Forum on Information Standards in Heritage

[News](#)

[About](#)

[MIDAS Heritage](#)

[Terminology](#)

[Heritage Information](#)

[FISH-HEIRNET](#)

[Working Groups](#)

[Development](#)



Historic Environment thesauri and Uniclass - an exploratory mapping

Peter McKeague
Spatial Information Manager

Historic Environment Scotland

(with thanks to Vajira Premadasa, HES)

FISH Vocabularies

The vocabularies in different formats, a FISH thesaurus table structure and latest list of candidate terms

All the resources here are free to use and do not require FISH membership.

Thesauri last updated February 2017 (version 20)

Archaeological Objects Thesaurus

- Originally developed by the Archaeological Objects Working Party and published by the mda. It provides guidance for the recording of archaeological objects in Britain and Ireland covering all historical periods (e.g. *corn dolly*, *cremation*, *cross*). Now maintained by FISH on behalf of the heritage sector.

- [Search](#) [Linked Data](#) [CSV](#)

Archaeological Sciences Thesaurus

- Terminology used for recording the techniques, recovery methods and materials associated with archaeological sciences (e.g. *tree-ring analysis*, *modification state*, *pathology*). Maintained by Historic England on behalf of the FISH Terminology Working Group.

- [Search](#) [Linked Data](#) [CSV](#)

Building Materials Thesaurus

Contact FISH via

terminologies@HistoricEngland.org.uk

Search the website

Recent Posts

[IRMS Conference 2017 \(21-23 May, Glasgow\)](#)
May 15, 2017

[Policy-UK Forum: A New Framework for UK Data Protection \(London, 18 May 2017\)](#) May 5, 2017

[Building Cultural Heritage Knowledge, British Museum \(27-28 July 2017\)](#) April 7, 2017

Archives

Select Month ▼

Monument Types Thesaurus

- Terminology relating to the built and buried heritage of the British Isles and used for recording sites, monuments, buildings and structures (e.g. *beer cellar*, *macula*, *railway hotel*).

- [Search](#) [Linked Data](#) [CSV](#)
- [Class definitions](#)

Building Materials Thesaurus

- Terminology used for recording the main construction materials of monuments, buildings and structures relating to the built and buried heritage of the British Isles. Includes natural/animal and man-made material (e.g. *cement mix*, *fossil*, *fibre-glass*). Maintained by FISH on behalf of the heritage sector.

- [Search](#) [Linked Data](#) [CSV](#)

Components Thesaurus

- Terminology covering divisions and structural elements of a building or monument. Includes terms that describe areas and spaces, decorative features, fixtures and fittings, machinery and implied features (e.g. *post hole*, *cartouche*, *truss*).

- [Search](#) [Linked Data](#) [CSV](#)

FISH Thesaurus of Monument Types

View by Letter:

[A](#)[B](#)[C](#)[D](#)[E](#)[F](#)[G](#)[H](#)[I](#)[J](#)[K](#)[L](#)[M](#)[N](#)[O](#)[P](#)[Q](#)[R](#)[S](#)[T](#)[U](#)[V](#)[W](#)[X](#)[Y](#)[Z](#)

[View by Class:](#)

18/05/2017



How to use the Thesaurus

If you already know the term you are looking for, simply find it in the alphabetic index, then click on the term to see the full entry. From the alphabetic entry you can follow links through to broad, narrow and related terms (etc). Clicking on the class name will refresh the hierarchical class listing on the right hand side of the screen.

If you are looking for ideas about which term to use, start by selecting the appropriate class from the class index, and follow links through from there.



To see this page again, click on the Help icon

Key to Abbreviations

Use	Preferred Term
UF	Use For
SN	Scope Note
CL	Class name
BT	Broad Term
NT	Narrow Term
RT	Related Term

Class Names

[AGRICULTURE AND SUBSISTENCE](#)
[CIVIL](#)
[COMMEMORATIVE](#)
[COMMERCIAL](#)
[COMMUNICATIONS](#)
[DEFENCE](#)
[DOMESTIC](#)
[EDUCATION](#)
[GARDENS PARKS AND URBAN SPACES](#)
[HEALTH AND WELFARE](#)
[INDUSTRIAL](#)
[MARITIME](#)
[MONUMENT <BY FORM>](#)
★ [RECREATIONAL](#)
[RELIGIOUS RITUAL AND FUNERARY](#)
[TRANSPORT](#)
[UNASSIGNED](#)
[WATER SUPPLY AND DRAINAGE](#)

What is a Pleasure Pier?

FISH Thesaurus of Monument Types

View by Letter:

[A](#)[B](#)[C](#)[D](#)[E](#)[F](#)[G](#)[H](#)[I](#)[J](#)[K](#)[L](#)[M](#)[N](#)[O](#)[P](#)[Q](#)[R](#)[S](#)[T](#)[U](#)[V](#)[W](#)[X](#)[Y](#)[Z](#)

View by Class:

18/05/2017



[PLATEWAY](#)
[PLATFORM](#)
[PLATFORM BARROW](#)
[PLATFORM CAIRN](#)
[Platform Canopy](#)
[Platform House](#)
[Platform Settlement](#)
[PLATFORM SHELTER](#)
[PLATING WORKS](#)
[Play School](#)
[Playground](#)
[PLAYGROUND EQUIPMENT](#)
[PLAYGROUND SHELTER](#)
[Playhouse](#)
[PLAYING FIELD](#)
[PLEASANCE](#)
[Pleasaunce](#)
[PLEASURE GARDEN](#)
★ [PLEASURE PIER](#)
[PLEDGE DEPOT](#)
[Pledgehouse](#)
[PLOUGH HEADLAND](#)
[PLOUGH MARKS](#)
[Plumbago Mine](#)
[PLUNGE POOL](#)
[Plush Works](#)
[Plush Workshop](#)
[PLUTO SITE](#)
[Plymouth Brethren Meeting House](#)
[POINT BLOCK](#)
[Pointed Arch Bridge](#)
[Pointed Bastion](#)
[Pole](#)
[POLICE BOX](#)
[Police Court](#)
[Police Headquarters](#)
[POLICE HOUSE](#)
[Police Office](#)
[POLICE STATION](#)
[Police Store](#)
[POLICE TELEPHONE PILLAR](#)
[POLICE TRAINING COLLEGE](#)
[Police Wireless Station](#)
[POLISHING SHOP](#)

Class Names

[AGRICULTURE AND SUBSISTENCE](#)
[CIVIL](#)
[COMMEMORATIVE](#)
[COMMERCIAL](#)
[COMMUNICATIONS](#)
[DEFENCE](#)
[DOMESTIC](#)
[EDUCATION](#)
[GARDENS PARKS AND URBAN SPACES](#)
[HEALTH AND WELFARE](#)
[INDUSTRIAL](#)
[MARITIME](#)
[MONUMENT <BY FORM>](#)
[RECREATIONAL](#)
[RELIGIOUS RITUAL AND FUNERARY](#)
[TRANSPORT](#)
[UNASSIGNED](#)
[WATER SUPPLY AND DRAINAGE](#)

FISH Thesaurus of Monument Types

View by Letter:

[A](#) [B](#) [C](#) [D](#) [E](#) [F](#) [G](#) [H](#) [I](#) [J](#) [K](#) [L](#) [M](#) [N](#) [O](#) [P](#) [Q](#) [R](#) [S](#) [T](#) [U](#) [V](#) [W](#) [X](#) [Y](#) [Z](#)

[View by Class:](#)

18/05/2017



PLEASURE PIER

SN A seaside pier used as a promenade and amusement park.

CL [RECREATIONAL](#)

RT [PIER](#)
[PIER PAVILION](#)
[SEASIDE PAVILION](#)
[TELESCOPE \(TERRESTRIAL\)](#)

Class Names

[AGRICULTURE AND SUBSISTENCE](#)
[CIVIL](#)
[COMMEMORATIVE](#)
[COMMERCIAL](#)
[COMMUNICATIONS](#)
[DEFENCE](#)
[DOMESTIC](#)
[EDUCATION](#)
[GARDENS PARKS AND URBAN SPACES](#)
[HEALTH AND WELFARE](#)
[INDUSTRIAL](#)
[MARITIME](#)
[MONUMENT <BY FORM>](#)
[RECREATIONAL](#)
[RELIGIOUS RITUAL AND FUNERARY](#)
[TRANSPORT](#)
[UNASSIGNED](#)
[WATER SUPPLY AND DRAINAGE](#)

Thesaurus

The thesaurus is a useful tool to help w actively being developed and we welco

CANMORE 🛒 (0) 📖 (0) [Login](#) | [Register](#) [Accessibility](#)

Q Search All

[Home](#) [About](#) [MyCanmore](#) [Search](#) [Galleries](#) [Search Room](#) [Resources](#) [Enquiries](#)
[Search Sites](#) [Search Map](#) [Search Thesaurus](#) [Search Collections](#) [Search Images](#) [Search Digital Publications](#)

PLEASURE PIER



[Back to search](#)

A seaside pier used as a promenade and amusement park.

Classifications

- Monument Thesaurus (rcahms)
- > Recreational
- >> Pleasure Pier

[Display sites of this type](#)

Related Terms

Term **Note**

PIER	A structure, often of iron or wood, open below, running out into the sea and used as a promenade and landing stage. Please use PLEASURE PIER for piers used as a promenade and amusement park.
------	--

[Heritagedata.org: Linked Data resource](#)



Heritage Data

Linked Data Vocabularies for Cultural Heritage

[Scheme List](#) |
 [Concept Search](#) |
 [SPARQL Query](#) |
 [About The Project](#)

http://purl.org/heritagedata/schemes/eh_tmt2 ([QR Code](#))

Property	Value
rdf:type	skos:ConceptScheme
cc:license	http://creativecommons.org/licenses/by/3.0
cc:attributionURL	http://www.historicengland.org.uk
cc:attributionName	Historic England
dct:title	FISH Thesaurus of Monument Types
rdfs:label	FISH Thesaurus of Monument Types
skos:hasTopConcept	MONUMENT <BY FORM>
skos:hasTopConcept	RELIGIOUS RITUAL AND FUNERARY
skos:hasTopConcept	GARDENS PARKS AND URBAN SPACES
skos:hasTopConcept	WATER SUPPLY AND DRAINAGE
skos:hasTopConcept	COMMERCIAL
skos:hasTopConcept	COMMEMORATIVE
skos:hasTopConcept	DEFENCE
skos:hasTopConcept	DOMESTIC
skos:hasTopConcept	INDUSTRIAL
skos:hasTopConcept	AGRICULTURE AND SUBSISTENCE
skos:hasTopConcept	EDUCATION
skos:hasTopConcept	CIVIL
skos:hasTopConcept	HEALTH AND WELFARE
skos:hasTopConcept	UNASSIGNED
skos:hasTopConcept	TRANSPORT
skos:hasTopConcept	COMMUNICATIONS
skos:hasTopConcept	MARITIME
skos:hasTopConcept	★ RECREATIONAL
dct:description	Terminology relating to the built and buried heritage of the British Isles and used for recording sites, monuments, buildings and structures.
dct:coverage	http://data.ordnancesurvey.co.uk/id/country/england
dct:publisher	http://www.historicengland.org.uk
dct:identifier	http://purl.org/heritagedata/schemes/eh_tmt2
dct:issued	2013-07-17T08:43:50

RDF downloads ([N-Triples](#) [Turtle](#) [JSON](#) [XML](#))

Heritage Data

Linked Data Vocabularies for Cultural Heritage

[Scheme List](#) | [Concept Search](#) | [SPARQL Query](#) | [About The Project](#)

http://purl.org/heritagedata/schemes/eh_tmt2/concepts/70551 ([QR Code](#))

Property	Value
rdf:type	skos:Concept
cc:license	http://creativecommons.org/licenses/by/3.0
cc:attributionURL	http://www.english-heritage.org.uk
cc:attributionName	English Heritage
skos:topConceptOf	FISH Thesaurus of Monument Types
skos:inScheme	FISH Thesaurus of Monument Types
skos:prefLabel	RECREATIONAL
skos:narrower	YOUTH HOSTEL
skos:narrower	WINTER GARDEN
skos:narrower	WATER SPORTS CENTRE
skos:narrower	VISITORS CENTRE (LEISURE)
skos:narrower	VIEWING TERRACE
skos:narrower	TRIM TRAIL
skos:narrower	TOTALISATOR
skos:narrower	TELESCOPE (TERRESTRIAL)
skos:narrower	SPORTS SITE
skos:narrower	SOFT PLAY AREA
skos:narrower	SHOWGROUND
skos:narrower	SEASIDE PAVILION
skos:narrower	SCOUT HUT
skos:narrower	SCOREBOARD
skos:narrower	RIDE
skos:narrower	RECREATIONAL HALL
skos:narrower	RECREATION CENTRE
skos:narrower	★ PLEASURE PIER
skos:narrower	PLAYGROUND SHELTER
skos:narrower	PLAIN AN GWARRY
skos:narrower	PIER PAVILION
skos:narrower	OBSERVATION TOWER
skos:narrower	MUSIC SPEECH AND DANCE VENUE
skos:narrower	MINIATURE GOLF COURSE
skos:narrower	HUNTING SITE
skos:narrower	HOLIDAY CENTRE
skos:narrower	HIDE
skos:narrower	HEALTH ESTABLISHMENT
skos:narrower	HAUNTED HOUSE
skos:narrower	GAMBLING SITE
skos:narrower	FUN HOUSE
skos:narrower	FISHING LODGE

http://heritagedata.org/live/schemes/eh_tmt2/concepts/70551.html

Heritage Data

Linked Data Vocabularies for Cultural Heritage

[Scheme List](#) | [Concept Search](#) | [SPARQL Query](#) | [About The Project](#)

http://purl.org/heritagedata/schemes/eh_tmt2/concepts/92951 ([QR Code](#))

Property	Value
rdf:type	skos:Concept
cc:license	http://creativecommons.org/licenses/by/3.0
cc:attributionURL	http://www.english-heritage.org.uk
cc:attributionName	English Heritage
skos.inScheme	FISH Thesaurus of Monument Types
skos.prefLabel	PLEASURE PIER
skos.broader	RECREATIONAL
skos.scopeNote	A seaside pier used as a promenade and amusement park.
skos.related	TELESCOPE (TERRESTRIAL)
skos.related	PIER PAVILION
skos.related	SEASIDE PAVILION
skos.related	PIER
dct:publisher	http://www.english-heritage.org.uk
dct:identifier	http://purl.org/heritagedata/schemes/eh_tmt2/concepts/92951
dct:issued	2013-07-17T08:43:50

RDF downloads ([N-Triples](#) [Turtle](#) [JSON](#) [XML](#))

Except where otherwise noted, data content on this site is licensed by the respective attributed organisations under a [Creative Commons Attribution 3.0 License](#)

http://purl.org/heritagedata/schemes/eh_tmt2/concepts/92951

Heritage Data

Linked Data Vocabularies for Cultural Heritage

[Scheme List](#)[Concept Search](#)[SPARQL Query](#)[About The Project](#)

Search

Scheme:

COMPONENTS (EH)

Label:

English Heritage

COMPONENTS (EH)

EVIDENCE (EH)

MARITIME CRAFT TYPE (EH)

Historic England

FISH Archaeological Sciences Thesaurus

FISH Archaeological Objects Thesaurus

FISH Building Materials Thesaurus

FISH Event Types Thesaurus

FISH Thesaurus of Monument Types

Historic England Periods

RCAHMS

Archaeological Objects Thesaurus (Scotland)

Maritime Craft Thesaurus (Scotland)

Monument Type Thesaurus (Scotland)

RCAHMW

CONDITION RATING (WALES) (DRAFT)

CONDITION TREND (WALES)

EVENT (WALES) (DRAFT)

EVIDENCE (WALES) (DRAFT)

Except where otherwise noted, data content on this site is licensed by the respective attributed organisations under a [Creative Commons Attribution 3.0 License](#)

- TECHNICAL SUPPORT

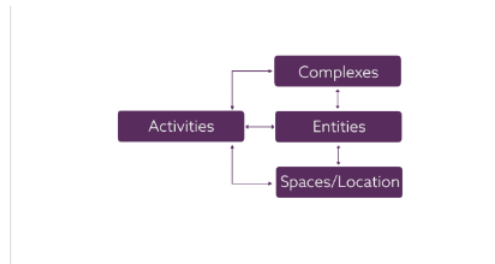
Share:  160 

CLASSIFICATION

First published 8th April 2015, last updated 26th April 2017.

THE TABLES

The suite of tables are broadly hierarchical, and allow information about a project to be defined from the broadest view of it to the most detailed. The Complexes table describes projects in overall terms and can be thought of in terms of the provision of an Activity. Complexes can be broken down as groupings of Entities, Activities and Spaces depending on the particular use.



Entities, Spaces/Locations and Activities tables



Uniclass 2015 - Entities, Elements/Functions, Systems and Products tables

Monument Types Thesaurus

- Terminology relating to the built and buried heritage of the British Isles and used for recording sites, monuments, buildings and structures (e.g. *beer cellar, macula, railway hotel*).

- [Search](#) [Linked Data](#) [CSV](#)
- [Class definitions](#)

- **Complexes**

This describes a project in overall terms. It can be a private house with garden, drive, garage and tool shed, or it can be a University campus with buildings for lecturing, administration, sport, halls of residence, etc. Rail networks and airports are also all examples of complexes.

This Complex is a holiday village.



- **Entities**

Entities are discrete things like buildings, bridges, tunnels etc. They provide the areas where different activities occur.

Within the holiday village above is a restaurant which is an Entity.



FISH Monument terms and Uniclass Complexes

Code	Group	Sub group	Section	Object	Title	Monument Type Thesaurus Term (upper case, singular, no punctuation)	Monument term Persistent URI
Co_40	40				Recreational complexes	RECREATIONAL	http://heritagedata.org/live/schemes/1/concepts/1587
Co_40_05	40	05			Amusement complexes	RECREATION GROUND	http://purl.org/heritagedata/schemes/eh_tmt2/concepts/69953
Co_40_05_02	40	05	02		Amphitheatres	AMPHITHEATRE	http://purl.org/heritagedata/schemes/1/concepts/502087
Co_40_05_03	40	05	03		Amusement parks	AMUSEMENT PARK	http://heritagedata.org/live/schemes/eh_tmt2/concepts/136910
Co_40_05_30	40	05	30		Fairground complexes	FAIR	http://heritagedata.org/live/schemes/eh_tmt2/concepts/68789
Co_40_05_63	40	05	63		Pleasure piers	PLEASURE PIER	http://heritagedata.org/live/schemes/eh_tmt2/concepts/92951
Co_40_05_89	40	05	89		Theme parks	No match	Would probably be equivalent of AMUSEMENT PARK

In the Monuments thesaurus, [Amusement park](#) is a narrow term of Recreation ground

A [Pleasure pier](#) may support a number of individual buildings including a [Pier Pavilion](#), an [Amusement Arcade](#) or a [Fairground Ride](#)

FISH Monument terms and Uniclass Entities

Code	Group	Sub group	Section	Object	Title	Monument Type Thesaurus Term (upper case, singular, no punctuation)	Monument term Persistent URI
En_32_50	32	50			Marine and water side entities	Not an exact match: MARITIME	http://heritagedata.org/live/schemes/1/concepts/1382
En_32_50_22	32	50	22		Dock buildings	No exact match	A range of terms for buildings that happen to be located at the docks
En_32_50_44	32	50	44		Jetties	JETTY	http://heritagedata.org/live/schemes/1/concepts/1400
En_32_50_46	32	50	46		Landing stages	LANDING STAGE	http://heritagedata.org/live/schemes/1/concepts/1401
En_32_50_63	32	50	63		Piers	PIER	http://heritagedata.org/live/schemes/1/concepts/1404
En_32_50_69	32	50	69		Quays	QUAY	http://heritagedata.org/live/schemes/1/concepts/1405
En_32_50_98	32	50	98		Wharfs	WHARF	http://heritagedata.org/live/schemes/1/concepts/1406

Components Thesaurus

- Terminology covering divisions and structural elements of a building or monument. Includes terms that describe areas and spaces, decorative features, fixtures and fittings, machinery and implied features (e.g. *post hole, cartouche, truss*).

[Search](#)

[Linked Data](#)

[CSV](#)

- **Products**

Finally, the individual products used to construct a system can be specified, e.g. joist hangers, terrazzo tiles, gas fired boilers.

Building Materials Thesaurus

- Terminology used for recording the main construction materials of monuments, buildings and structures relating to the built and buried heritage of the British Isles. Includes natural/animal and man-made material (e.g. *cement mix, fossil, fibre-glass*). Maintained by FISH on behalf of the heritage sector.

[Search](#)

[Linked Data](#)

[CSV](#)

FISH Component terms and Uniclass Products

Code	Group	Sub group	Section	Object	Title	Monument Type Thesaurus Term (upper case, singular, no punctuation)	Monument term Persistent URI
Pr_20_85_48	20	85	48		Lintels	LINTEL	http://heritagedata.org/live/schemes/eh_com/concepts/137950
Pr_20_85_48_02	20	85	48	02	Aggregate concrete trough lintels		
Pr_20_85_48_11	20	85	48	11	Carbon steel lintels		
Pr_20_85_48_13	20	85	48	13	Clay block trough lintels		
Pr_20_85_48_15	20	85	48	15	Concrete lintels		
Pr_20_85_48_33	20	85	48	33	Glass-reinforced concrete (GRC) built-in lintel heads		
Pr_20_85_48_34	20	85	48	34	Glass-reinforced concrete (GRC) dressing lintel heads		
						DOOR LINTEL	http://heritagedata.org/live/schemes/eh_com/concepts/137691
						WINDOW LINTEL	http://heritagedata.org/live/schemes/eh_com/concepts/138436

[Scheme List](#) | [Concept Search](#) | [SPARQL Query](#) | [About The Project](#)

Search

Scheme: **FISH Building Materials Thesaurus** Label: **Concrete**

9 matches returned for search on 'Concrete'

- **CONCRETE**
http://purl.org/heritagedata/schemes/eh_tbm/concepts/97840
- **Concrete Block**
http://purl.org/heritagedata/schemes/eh_tbm/concepts/97840
- **Concrete Tile**
http://purl.org/heritagedata/schemes/eh_tbm/concepts/98241
- **Concrete Tile**
http://purl.org/heritagedata/schemes/eh_tbm/concepts/97840
- **Granolithic Concrete**
http://purl.org/heritagedata/schemes/eh_tbm/concepts/97840
- **Granolithic Concrete**
http://purl.org/heritagedata/schemes/eh_tbm/concepts/97944
- **LIGHTWEIGHT CONCRETE**
http://purl.org/heritagedata/schemes/eh_tbm/concepts/98025
- **PRESTRESSED CONCRETE**
http://purl.org/heritagedata/schemes/eh_tbm/concepts/98124
- **REINFORCED CONCRETE**
http://purl.org/heritagedata/schemes/eh_tbm/concepts/98145

[Scheme List](#) | [Concept Search](#) | [SPARQL Query](#) | [About The Project](#)

Search

Scheme: **COMPONENTS (EH)** Label: **lintel**

3 matches returned for search on 'lintel'

- **DOOR LINTEL**
http://purl.org/heritagedata/schemes/eh_com/concepts/137691
- **LINTEL**
http://purl.org/heritagedata/schemes/eh_com/concepts/137950
- **WINDOW LINTEL**
http://purl.org/heritagedata/schemes/eh_com/concepts/138436

Product list

F3		f*		Title					
	A	B	C	D	E	F	G	H	I
1	Pr Products - 26 April 2017 - v1.6								
2									
3	Code	Group	Sub gro	Section	Object	Title	NBS Code	NRM	
222	Pr_20_29_30_96	20	29	30	96	Window fixing lugs			
007	Pr_20_85_32_94	20	85	32	94	Unplasticized polyvinyl chloride (PVC-U) window sub-frames			
010	Pr_20_85_32_98	20	85	32	98	Wood window sub-frames			
521	Pr_25_57_51_52	25	57	51	52	Metallized plastics window films			
523	Pr_25_57_51_60	25	57	51	60	Plastics window films	45-65-50/332 F		
972	Pr_25_93_52_33	25	93	52	33	Glass-reinforced concrete (GRC) bay window sills	45-25-75/384 C		
142	Pr_30_36_08_95	30	36	08	95	Window casement fasteners	45-25-60/385 V		
143	Pr_30_36_08_96	30	36	08	96	Window latches	45-25-18/310 C		
144	Pr_30_36_08_97	30	36	08	97	Window locks	45-25-18/460 V		
145	Pr_30_36_08_98	30	36	08	98	Window sash fasteners	45-25-18/470 V		
160	Pr_30_36_36_08	30	36	36	08	Boxed sash window hanging fittings	45-25-42/320 E		
162	Pr_30_36_36_10	30	36	36	10	Butt window hinges	45-25-42/450 V		
174	Pr_30_36_36_32	30	36	36	32	Friction pivot window hinges	45-25-42/450 V		
178	Pr_30_36_36_67	30	36	36	67	Projection window hinges	45-25-42/460 V		
180	Pr_30_36_36_75	30	36	36	75	Sash window spiral balances	45-25-42/410 S		
182	Pr_30_36_36_80	30	36	36	80	Single axis window hinges	45-25-42/430 S		
185	Pr_30_36_36_96	30	36	36	96	Window friction pivot hinges	45-25-42/440 V		
202	Pr_30_36_59_76	30	36	59	76	Sash window pulls	45-25-60/375 S		
204	Pr_30_36_59_94	30	36	59	94	Window casement stays	45-25-60/390 V		
205	Pr_30_36_59_95	30	36	59	95	Window latch and lock operating handles	45-25-60/395 V		
206	Pr_30_36_59_96	30	36	59	96	Window over centre casement stays	45-25-60/400 V		
207	Pr_30_36_59_97	30	36	59	97	Window remote manual openers	45-25-60/405 V		
208	Pr_30_36_59_98	30	36	59	98	Window restrictor stays	45-25-60/410 V		
392	Pr_30_59_57_04	30	59	57	04	Anti-burglar window bars	45-25-97/345 A		
401	Pr_30_59_57_77	30	59	57	77	Security window screens	45-25-97/350 S		
467	Pr_30_59_97	30	59	97		Window panels			
468	Pr_30_59_97_16	30	59	97	16	Glazed security window panels	45-20-60/360 F		
472	Pr_30_59_98	30	59	98		Window units			
473	Pr_30_59_98_02	30	59	98	02	Aluminium window units	45-25-99/310 A		
474	Pr_30_59_98_03	30	59	98	03	Aluminium frame roof window units	45-25-99/360 A		
475	Pr_30_59_98_15	30	59	98	15	Composite window units	45-25-99/320 C		
476	Pr_30_59_98_72	30	59	98	72	Rigid polyurethane frame roof window units	45-25-99/370 F		

lists the individual parts used to construct a system

Heritage Data

Linked Data Vocabularies for Cultural Heritage

[Scheme List](#) | [Concept Search](#) | [SPARQL Query](#) | [About The Project](#)

Search

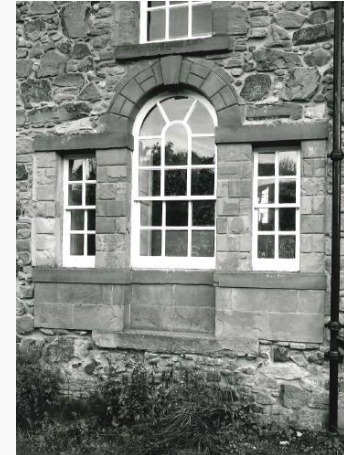
Scheme: Label:

26 matches returned for search on "WINDOW"

- [BAY WINDOW](http://purl.org/heritagedata/schemes/eh_com/concepts/137430)
http://purl.org/heritagedata/schemes/eh_com/concepts/137430
- [FRENCH WINDOW](http://purl.org/heritagedata/schemes/eh_com/concepts/137798)
http://purl.org/heritagedata/schemes/eh_com/concepts/137798
- [LACED WINDOW](http://purl.org/heritagedata/schemes/eh_com/concepts/137932)
http://purl.org/heritagedata/schemes/eh_com/concepts/137932
- [LANCET WINDOW](http://purl.org/heritagedata/schemes/eh_com/concepts/137936)
http://purl.org/heritagedata/schemes/eh_com/concepts/137936
- [LOWSIDE WINDOW](http://purl.org/heritagedata/schemes/eh_com/concepts/137966)
http://purl.org/heritagedata/schemes/eh_com/concepts/137966
- [MULLIONED WINDOW](http://purl.org/heritagedata/schemes/eh_com/concepts/137995)
http://purl.org/heritagedata/schemes/eh_com/concepts/137995
- [ORIEL WINDOW](http://purl.org/heritagedata/schemes/eh_com/concepts/138038)
http://purl.org/heritagedata/schemes/eh_com/concepts/138038
- [PIERCED WINDOW](http://purl.org/heritagedata/schemes/eh_com/concepts/138083)
http://purl.org/heritagedata/schemes/eh_com/concepts/138083
- [Palladian Window](http://purl.org/heritagedata/schemes/eh_com/concepts/138908)
http://purl.org/heritagedata/schemes/eh_com/concepts/138908
- [QUATREFOIL WINDOW](http://purl.org/heritagedata/schemes/eh_com/concepts/138138)
http://purl.org/heritagedata/schemes/eh_com/concepts/138138
- [ROSE WINDOW](http://purl.org/heritagedata/schemes/eh_com/concepts/138183)
http://purl.org/heritagedata/schemes/eh_com/concepts/138183
- [SASH WINDOW](http://purl.org/heritagedata/schemes/eh_com/concepts/138197)
http://purl.org/heritagedata/schemes/eh_com/concepts/138197
- [TRACERIED HEAD WINDOW](http://purl.org/heritagedata/schemes/eh_com/concepts/138348)
http://purl.org/heritagedata/schemes/eh_com/concepts/138348
- [TREFOIL WINDOW](http://purl.org/heritagedata/schemes/eh_com/concepts/138362)
http://purl.org/heritagedata/schemes/eh_com/concepts/138362
- [Thermal Window](http://purl.org/heritagedata/schemes/eh_com/concepts/138863)
http://purl.org/heritagedata/schemes/eh_com/concepts/138863
- [VENETIAN WINDOW](http://purl.org/heritagedata/schemes/eh_com/concepts/138908)
http://purl.org/heritagedata/schemes/eh_com/concepts/138908
- [WHEEL WINDOW](http://purl.org/heritagedata/schemes/eh_com/concepts/138428)
http://purl.org/heritagedata/schemes/eh_com/concepts/138428
- [WINDOW](http://purl.org/heritagedata/schemes/eh_com/concepts/138435)
http://purl.org/heritagedata/schemes/eh_com/concepts/138435
- [WINDOW LINTEL](http://purl.org/heritagedata/schemes/eh_com/concepts/138436)
http://purl.org/heritagedata/schemes/eh_com/concepts/138436



Lancet



Venetian (Palladian)



Oriel windows



Window lintel

Heritage Data

Linked Data Vocabularies for Cultural Heritage

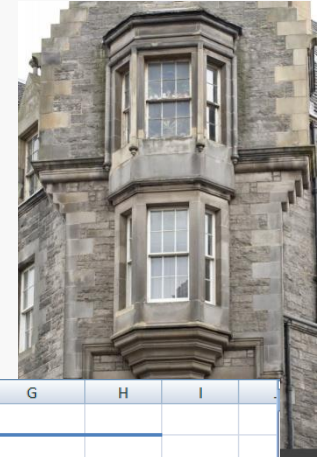
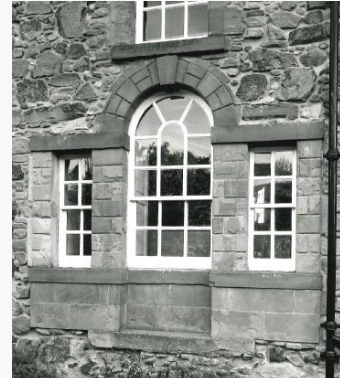
Scheme List | Concept Search | SPARQL Query | About The Project

Search

Scheme: COMPONENTS (EH) Label: WINDOW Submit

26 matches returned for search on 'WINDOW'

- [BAY WINDOW](http://purl.org/heritagedata/schemes/eh_com/concepts/137430)
- [FRENCH WINDOW](http://purl.org/heritagedata/schemes/eh_com/concepts/137798)
- [LACED WINDOW](http://purl.org/heritagedata/schemes/eh_com/concepts/137932)
- [LANCET WINDOW](http://purl.org/heritagedata/schemes/eh_com/concepts/137936)
- [LOWSIDE WINDOW](http://purl.org/heritagedata/schemes/eh_com/concepts/137966)
- [MULLIONED WINDOW](http://purl.org/heritagedata/schemes/eh_com/concepts/137995)



	A	B	C	D	E	F	G	H	I
Ss Systems - 26 April 2017 - v1.6									
	Code	Group	Sub group	Section	Object	Title	NBS Code	NRM	
Palladian Window	Ss_25_10_35_97	25	10	35	97	Window wall glazed screen systems			
PIERCED WINDOW	Ss_25_30	25	30			Door and window systems			
QUATREFOIL WINDOW	Ss_25_30_15_66	25	30	15	66	Precast concrete security window systems	20-40-60/180 f	2.6.1	External windows (d
ROSE WINDOW	Ss_25_30_95	25	30	95		Window systems			
SASH WINDOW	Ss_25_30_95_26	25	30	95	26	External window systems	25-50-95/125 f	2.6.1	External windows (d
TRACERIED HE	Ss_25_30_95_41	25	30	95	41	Internal window systems			
TREFOIL WINDOW	Ss_25_30_95_96	25	30	95	96	Window walling systems	25-50-95/170 f	2.7.1	Walls and partitions;
WHEEL WINDOW	Ss_25_38_20	25	38	20		Door, window and gate hardware systems			
WINDOW LINTEL	Ss_25_38_20_95	25	38	20	95	Window hardware systems	25-90-95/195 f	2.6.1	External windows (d
WINDOW	Ss_30_30_72	30	30	72		Rooflight and window systems			
WINDOW	Ss_30_30_72_73	30	30	72	73	Roof window systems	20-25-75/180 f	2.3.5	Rooflights, skylights

- [TREFOIL WINDOW](http://purl.org/heritagedata/schemes/eh_com/concepts/138362)
- [Thermal Window](http://purl.org/heritagedata/schemes/eh_com/concepts/138863)
- [VENETIAN WINDOW](http://purl.org/heritagedata/schemes/eh_com/concepts/138908)
- [WHEEL WINDOW](http://purl.org/heritagedata/schemes/eh_com/concepts/138428)
- [WINDOW](http://purl.org/heritagedata/schemes/eh_com/concepts/138435)
- [WINDOW LINTEL](http://purl.org/heritagedata/schemes/eh_com/concepts/138436)



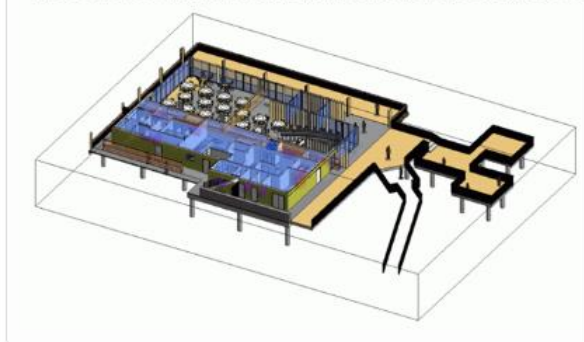
<https://canmore.org.uk/collection/1521903>

Window lintel

- **Activities**

This defines the activities to be carried out in the complex, entity or space. For example a prison complex provides a Detention activity at a high level, but can also be broken down into individual activities like exercise, sleeping, eating, working, etc. The Activities table also includes surveys, operation and maintenance and services.

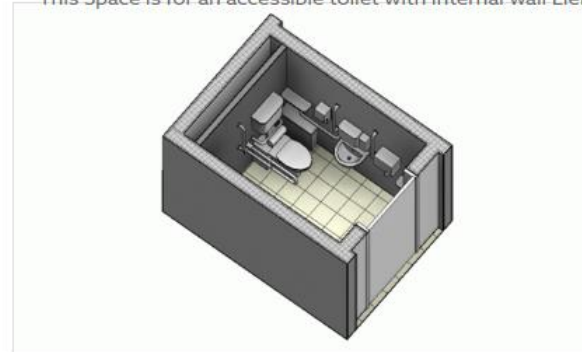
These spaces in the restaurant provide for the activities of dining and access.



- **Spaces/Locations**

In buildings, spaces are provided for various activities to take place. In some cases a space is only suitable for one activity, for example a kitchen, but a school hall may be used for assemblies, lunches, sports, concerts and dramas. Also classed as spaces are transport corridors that run between two locations, such as London Kings Cross to Newcastle, or the M1 from London to Leeds.

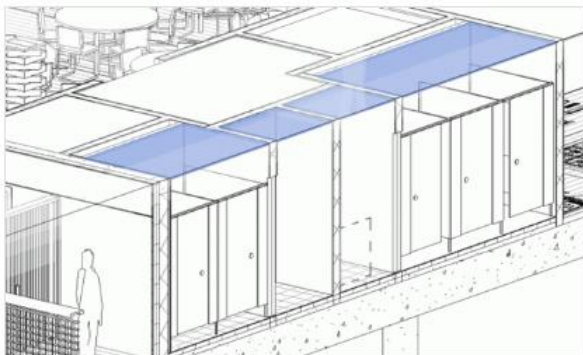
This Space is for an accessible toilet with internal wall Elements.



- **Systems**

Systems are the collection of components that go together to make an element or to carry out a function. For a pitched roof, the rafters, lining, tiles, ceiling boards, insulation and ceiling finish comprise a system, or a low temperature hot water heating system is formed from a boiler, pipework, tank, radiators etc. A signal system for a railway has a number of components and products; and the scum removal system is part of a wastewater treatment entity.

This illustrates a ceiling system with ceiling tile products.



- **Elements**

Elements are the main components of a structure like a bridge (foundations, piers, deck) or a building (floors, walls and roofs).

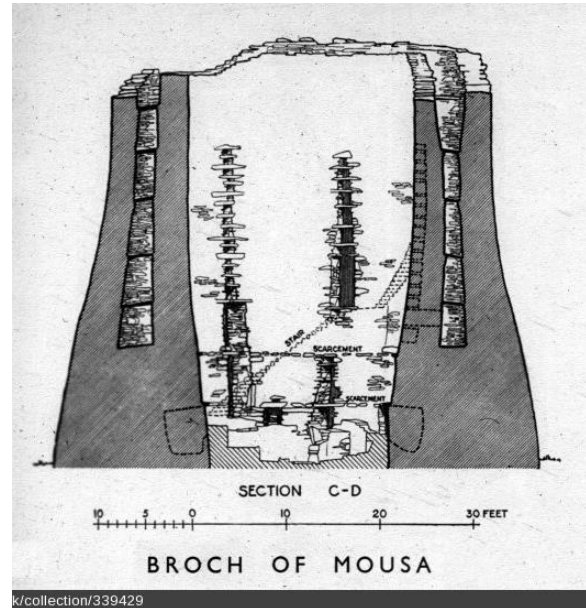
Scheme List	Concept Search	SPARQL Query	About The Project
http://purl.org/heritagedata/schemes/eh_com/concepts/137781 (QR Code)			
Property	Value		
rif:type	skos:Concept		
cc:license	http://creativecommons.org/licenses/by/3.0		
cc:attributionURL	http://www.english-heritage.org.uk		
cc:attributionName	English Heritage		
skos:inSchema	COMPONENTS (EH)		
skos:prefLabel	FLOOR		
skos:narrower	MOSAIC		
skos:broader	STRUCTURAL COMPONENT		
skos:scopeNote	The lower, horizontal surface of a room on which people walk. Can also mean a storey of a building.		
dct:publisher	http://www.english-heritage.org.uk		
dct:identifier	http://purl.org/heritagedata/schemes/eh_com/concepts/137781		
dct:issued	2013-07-17T09:07:50		
RDF downloads (N-Triples Turtle JSON XML)			

Gaps in Uniclass

As well as aligning existing vocabularies across the heritage thesauri and Uniclass values a large number of heritage terms do not appear in Uniclass



Recumbent Stone Circle



Broch



Castle

Complex/Entity, e.g.:

Broch, Cairn, Castle, Cathedral, Chapel, Great hall, Palace, Stone circle, Tithe barn

Gaps in Uniclass

Activities

There are generic terms for Conservation of Art and Artefacts and for Historic Building and Site Surveying. However there is nothing for building conservation, e.g.:

- Masonry pointing
- Turf topping
- Building fabric condition surveying (although there is a term for building services condition surveying)
- Underpinning
- Gilding
- Dowelling
- High-level masonry consolidation

Elements

- Decorative elements
- Ruined elements

Condition?

Weathering



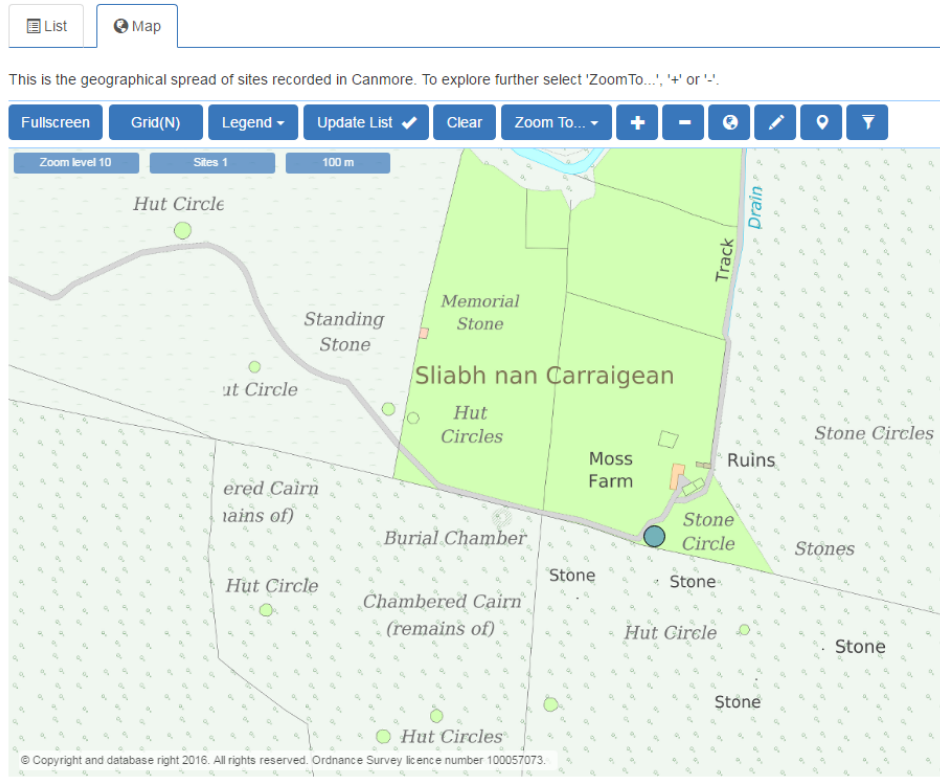
<https://canmore.org.uk/collection/621192>

Rust



Supplied for licensed use only by Scran. No Internet use. | 180517 | 27.jpg | www.scran.ac.uk/008-000-035-603-R

Missing concepts in both approaches



Spaces/Locations

Historic gardens, Designed landscapes, Prehistoric landscapes